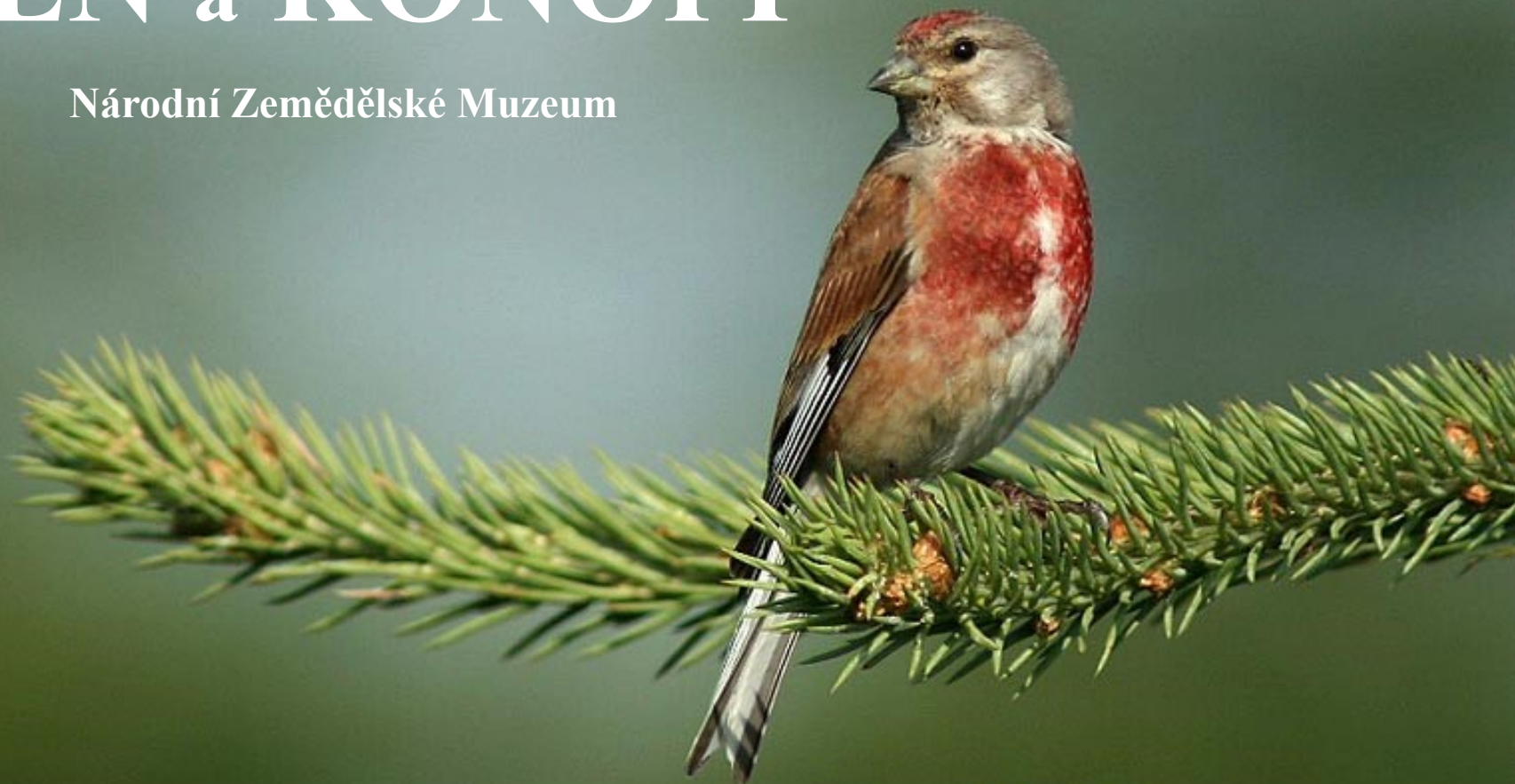


LEN a KONOPI

Národní Zemědělské Muzeum

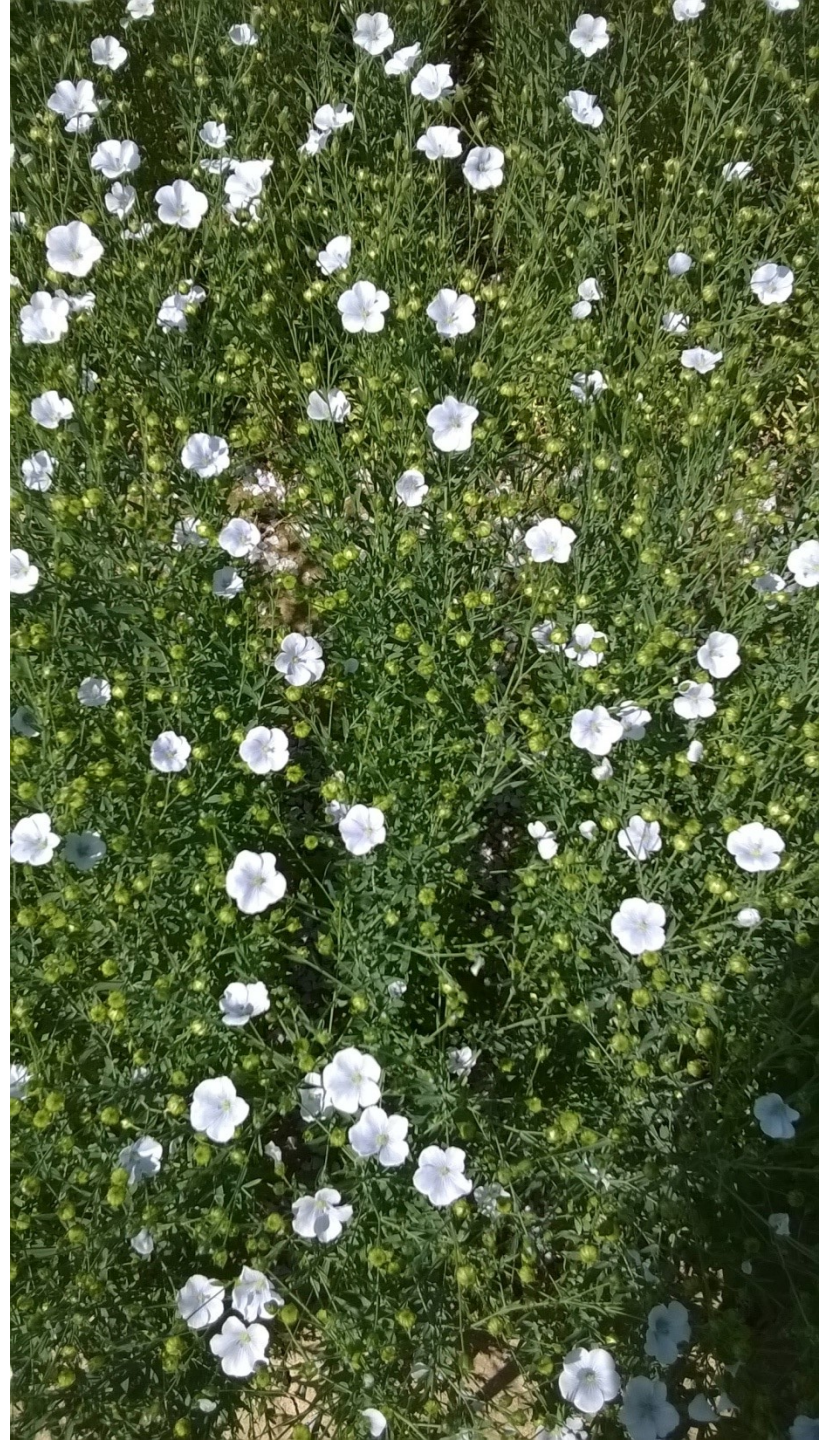


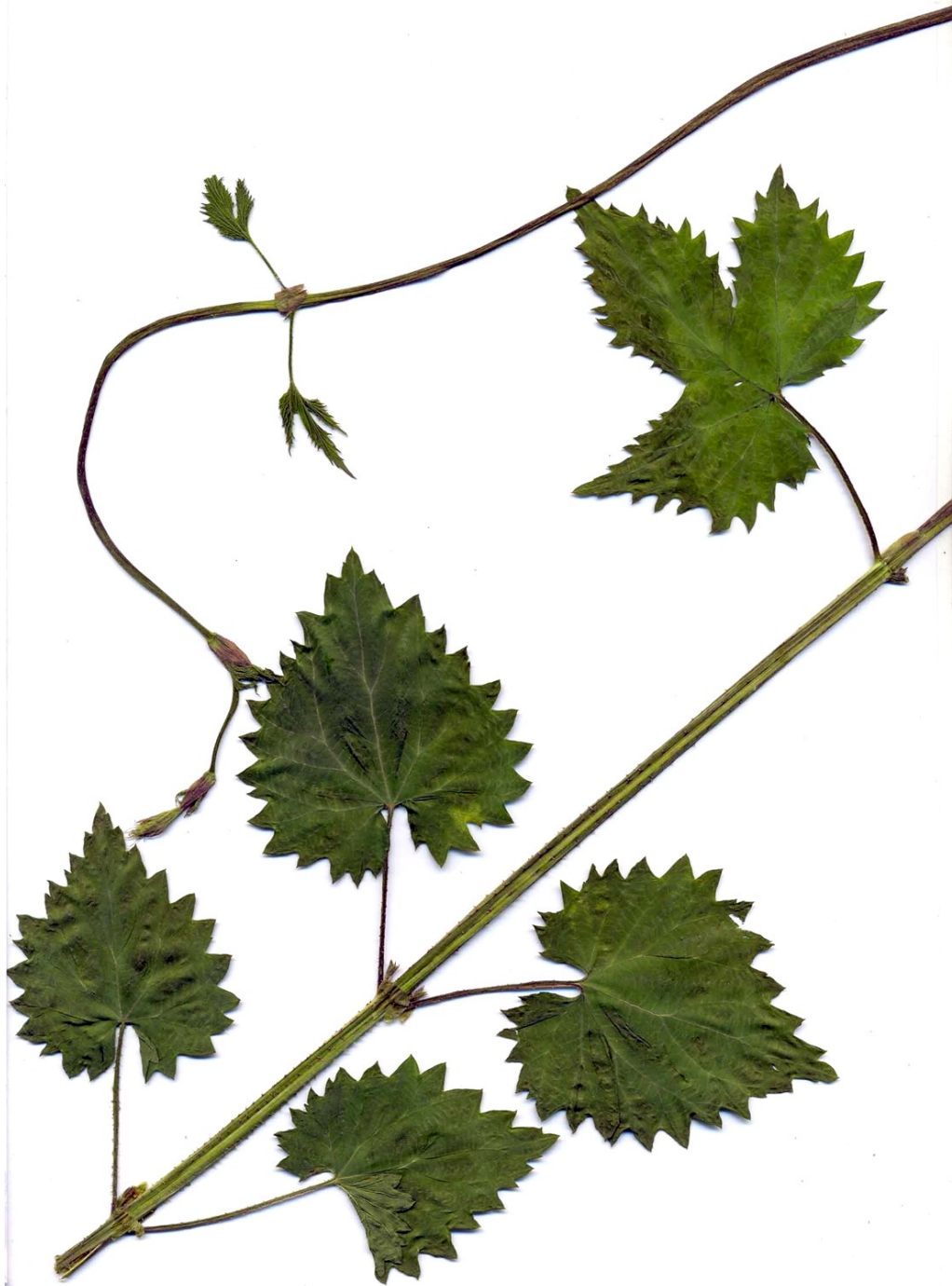
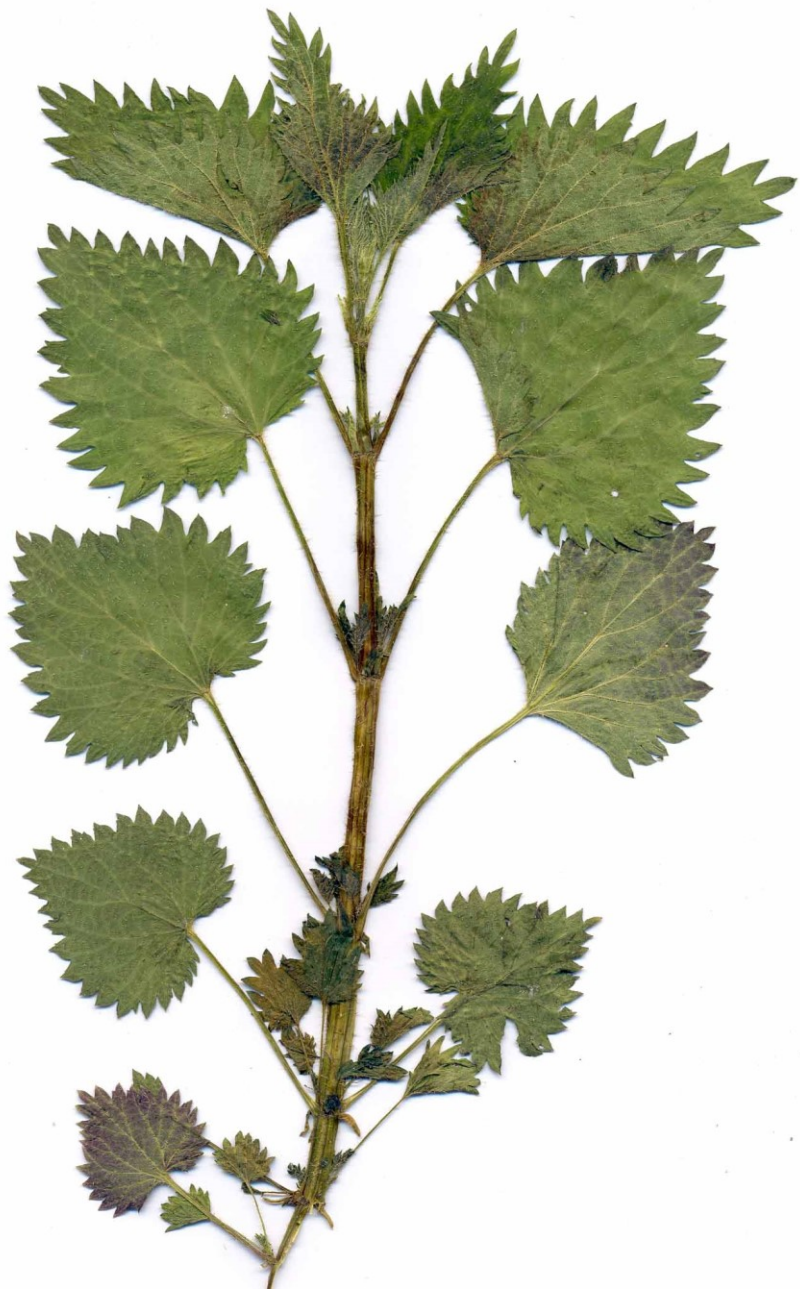
Jitka Kateřina Trčková, Jan Vít
KONOPA z.s.

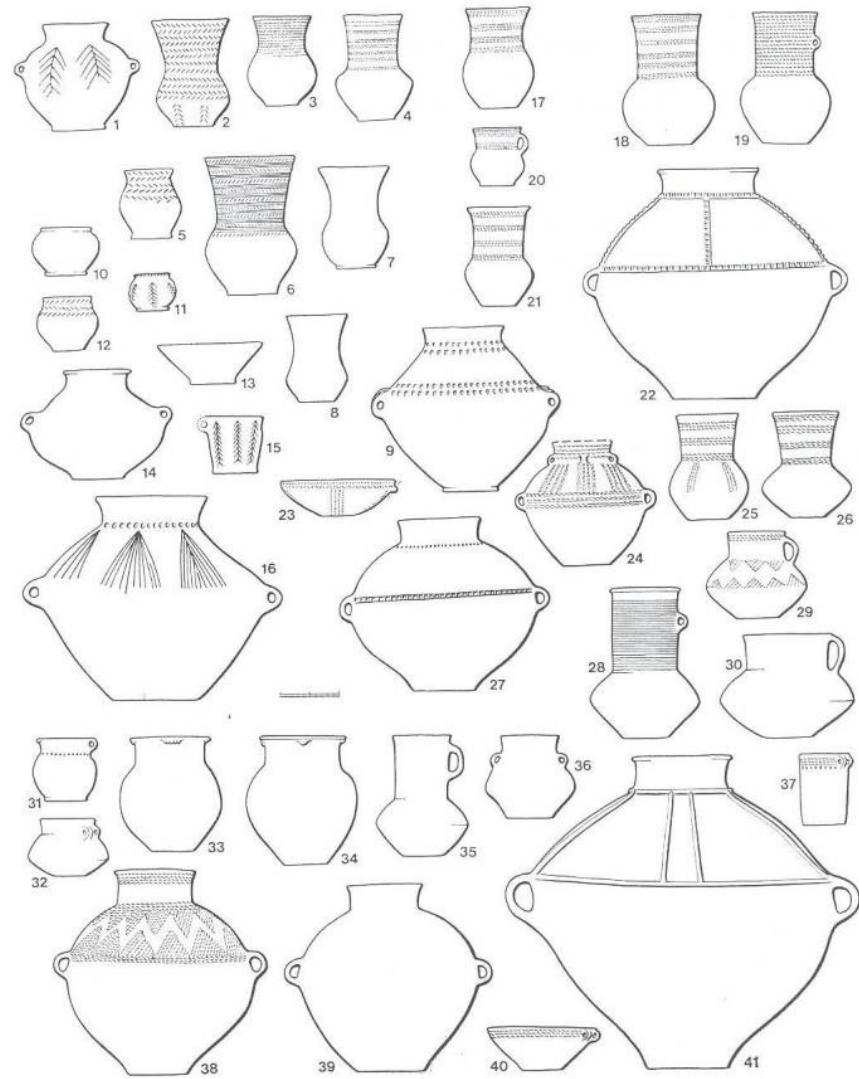
ZAPOMÍNANÉ MATERIÁLY – LEN A KONOPÍ





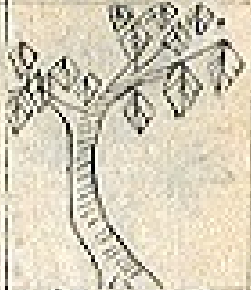






本草綱目

實楮

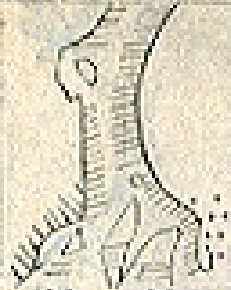


皮白桑



生寄桑

猪脊



葉黃

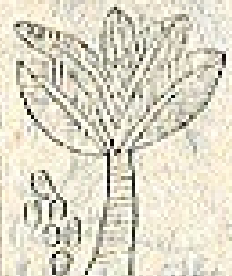


壳枳實枳

柳攢



皮腹大



實槐

刺蔓



子請石



藥烏辛

子櫻



子請石



藥烏辛

皮白楊

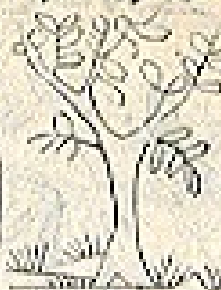


皮白榆



皮秦

仁蕤



花蒙密



花蒙密

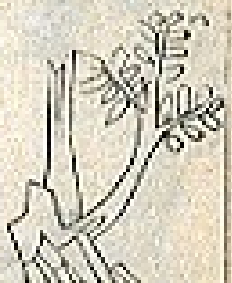
檀木



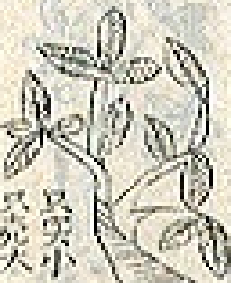
木杉



木白烏



子梔



朴厚



子棟苦



李郭



皮加



皮桐海

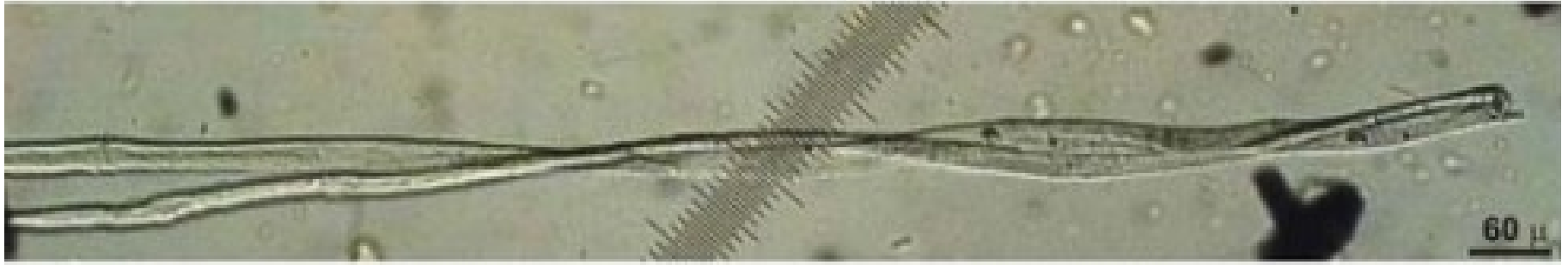


花茶山

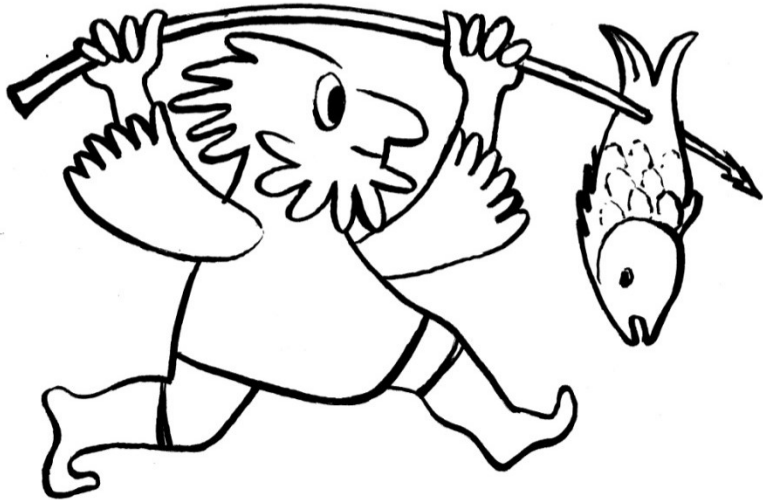


柳楊水

和











2000 μm



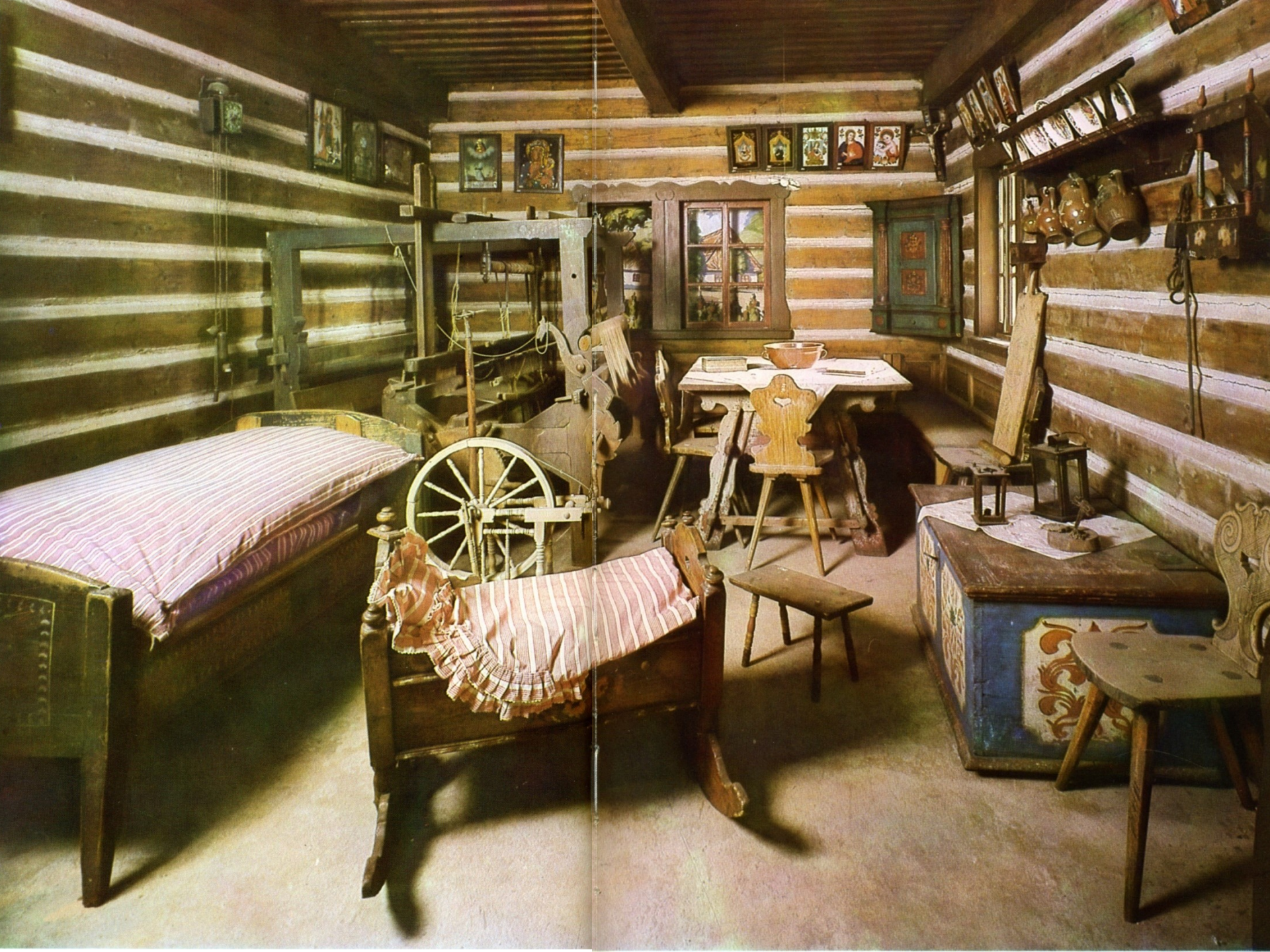




































KONOPA

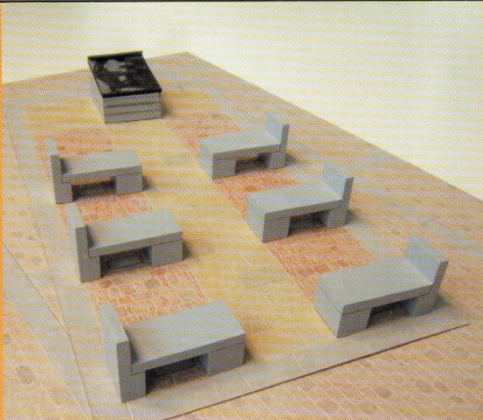
www.konopa.cz











56 / Akad. arch. Karel Lapka, Ing. arch. Kateřina Vávrová
Písek, výtvarné řešení parteru lokality „Bakaláře“



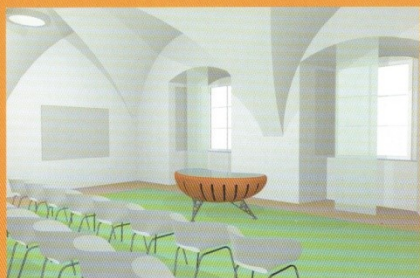
57 / Akad. arch. Karel Lapka, Ing. arch. Kateřina Vávrová
Písek, výtvarné řešení parteru lokality „Bakaláře“



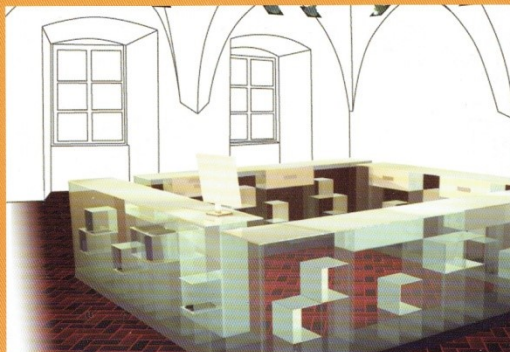
58 / Doc. Ing. arch. Milan Rejchl, Ing. arch. Ivo Rejchl
Dva rodinné domy v Praze 6



59 / Trčka Říha
Konopí – materiál pro architekturu XXI. století



60 / Petr Albrecht, student FMK UTB Zlín
Obřadní síň - řešení akustiky



61 / Mariána Marešová, studentka FMK UTB Zlín
Zámek Kamenice nad Lipou, pult do infocentra











Děkujeme za pozornost!

www.konopa.cz

info&konopa.cz